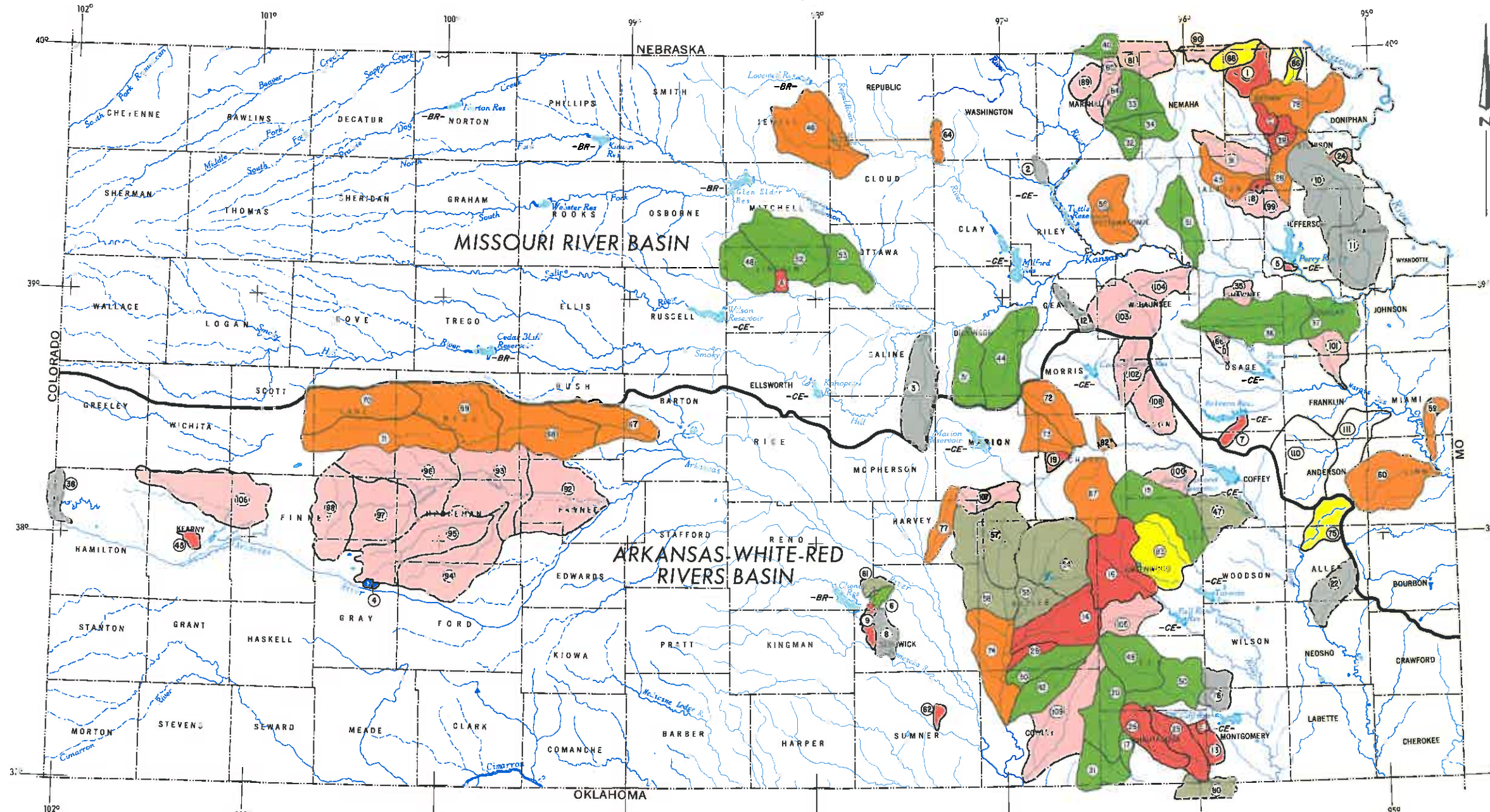


WATERSHED PROJECTS IN KANSAS

DECEMBER 31, 1973



P. L. 566 WATERSHEDS											
NO.	ACRES	NO.	ACRES	NO.	ACRES	NO.	ACRES	NO.	ACRES	NO.	ACRES
1. WALNUT CREEK	80,594	19. SILVER CREEK	18,418	39. LITTLE DELAWARE-MISSION	61,120	58. WHITWATER WEST	174,960	78. WOLF RIVER	159,363	97. PANWEE WATERSHED NO. 6	200,000
2. NORTH OTTER CREEK	13,600	20. UPPER BIG CANEY	142,500	40. MISSION CREEK (NEBR.)	12,820	59. MIDDLE CREEK	45,311	80. COTTON-COON-MISSION (OKLA.)	2,528	98. PANWEE WATERSHED NO. 7	198,400
3. GYPSUM CREEK	167,680	21. LOWER BIG CANEY	85,500	41. TIMBER CREEK	101,700	60. BIG SUGAR CREEK	203,350	81. TURKEY CREEK (NEBR.)	63,940	99. CEDAR CREEK	70,295
4. CIMARRON WATERSHED	6,440	22. BIG CREEK	70,072	42. ELK CREEK	98,280	61. MT. HOPE WATERSHED	23,078	82. PEYTON CREEK WATERSHED	24,288	100. EAGLE CREEK	46,804
5. THOMPSONVILLE WATERSHED	41,022	23. WHITE CLAY-BREWERY-WHISKEY	12,540	43. LYONS CREEK	178,778	62. HARGIS CREEK	6,300	83. WALNUT-WEST	179,490	101. TAYU CREEK	52,780
6. FROG CREEK	16,821	24. TWIN CANEY	98,370	44. LAKIN WATERSHED	10,806	63. DRY CREEK	15,232	84. SNIPE CREEK	16,420	102. ROCK CREEK	93,000
7. CLEAR CREEK	22,496	25. MIDDLE CANEY	100,210	45. BUFFALO CREEK	246,918	64. SNITZLER CREEK	20,200	85. VERMILLION (ROBIDOUX)	62,204	103. UPPER MILL CREEK	172,360
8. SPRING CREEK	27,840	26. GRASSHOPPER-COAL CREEK	61,440	46. BIG CREEK	84,100	65. WET WALNUT NO. 1	132,600	86. ROY'S CREEK	27,740	104. LOWER MILL CREEK	97,440
9. UPPER BIG STRANGER CREEK	190,923	27. MUDDY CREEK	29,960	47. SPILLMAN CREEK	119,360	66. WET WALNUT NO. 2	248,520	87. SOUTH FORK	184,570	105. OTTER CREEK	89,938
10. LOWER BIG STRANGER CREEK	158,871	28. ROCK CREEK	85,850	48. UPPER ELK RIVER	138,800	67. WET WALNUT NO. 3	228,100	88. PONY CREEK	37,500	106. JAMES DRAW	248,800
11. HUMBOLDT WATERSHED	30,485	29. TURKEY CREEK	107,226	49. LOWER ELK RIVER	130,440	68. WET WALNUT NO. 4	218,100	89. SPRING CREEK	37,000	107. DOYLE CREEK	87,784
12. BEE CREEK	45,350	30. IRISH CREEK	30,586	50. CROSS CREEK	113,786	69. WET WALNUT NO. 5	201,200	90. SOUTH FORK, NECHAMA (NEBR.)	24,960	108. ALLEN CREEK	87,000
13. LITTLE WALNUT-HICKORY	171,810	31. UPPER SALT CREEK	104,416	51. UPPER SALT CREEK	201,890	70. MIDDLE CREEK	102,600	91. SPRING-STRAIGHT CREEK	91,840	109. GROUPE-SILVER CREEK	249,750
14. UPPER VERDIGRIS RIVER	210,860	32. LOWER SALT CREEK	91,365	52. LOWER SALT CREEK	218,508	71. MIDDLE WALNUT	182,131	92. PANWEE WATERSHED NO. 1	242,360	110. UPPER POTTAWATOMIE CREEK	206,440
15. UPPER FALL RIVER	200,001	33. UPPER WALNUT NORTH	63,494	53. UPPER WALNUT NORTH	218,508	72. DEER CREEK	71,900	93. PANWEE WATERSHED NO. 2	244,000	111. LOWER POTTAWATOMIE CREEK	135,830
16. GRANT-SHANGHAI	25,200	34. UPPER WALNUT SOUTH	126,000	54. UPPER WALNUT SOUTH	63,494	73. DUCK CREEK	42,320	94. PANWEE WATERSHED NO. 3	231,717		
17. NEBO CREEK	9,360	35. ROCK CREEK WATERSHED #45	94,977	55. ROCK CREEK WATERSHED #45	126,000	74. SAND CREEK	64,300	95. PANWEE WATERSHED NO. 4	235,720		
		36. CHEYENNE CREEK (COLO.)	8,970	56. WHITWATER EAST	173,000			96. PANWEE WATERSHED NO. 5	235,720		

P. L. 566 WATERSHEDS

- APPLICATION RECEIVED
- APPLICATION APPROVED
- PRIORITY FOR PLANNING
- AUTHORIZED FOR PLANNING
- PLANNING COMPLETED
- AUTHORIZED FOR INSTALLATION
- UNDER CONSTRUCTION
- CONSTRUCTION COMPLETED
- TERMINATED OR NOT FEASIBLE

PILOT WATERSHEDS

- A. LOST CREEK 12,348
- B. SNIPE CREEK 16,420
- C. LITTLE DELAWARE-MISSION CREEKS 27,971
- D. SNITZLER CREEK 19,910
- E. AIKEN CREEK 6,725

MAJOR RESERVOIRS

- CE- CORP. OF ENGINEERS
- BR- BUREAU OF RECLAMATION

SOURCE: SCS DRAWINGS 5-S-32,550, 5-R-19,914 AND INFORMATION FROM FIELD TECHNICIANS. ALBERS EQUAL AREA PROJECTION.

